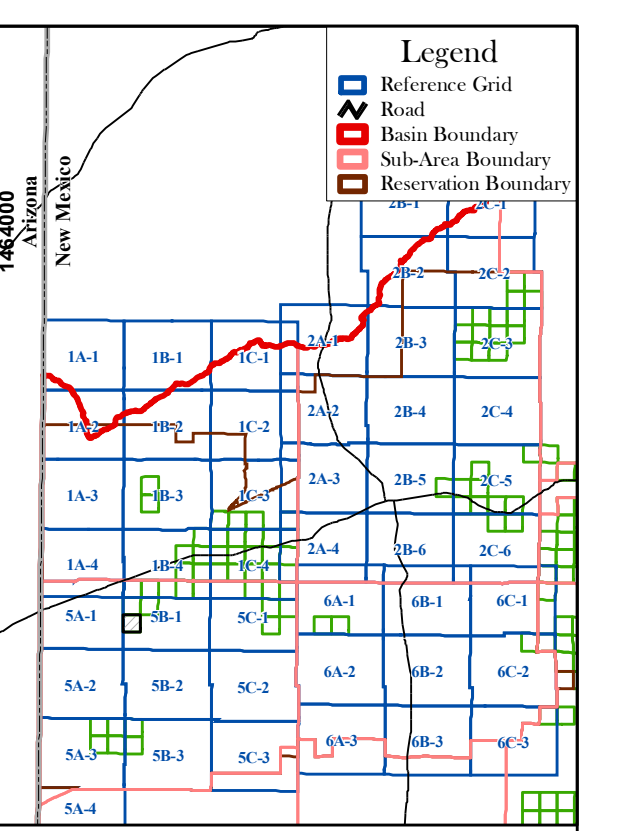
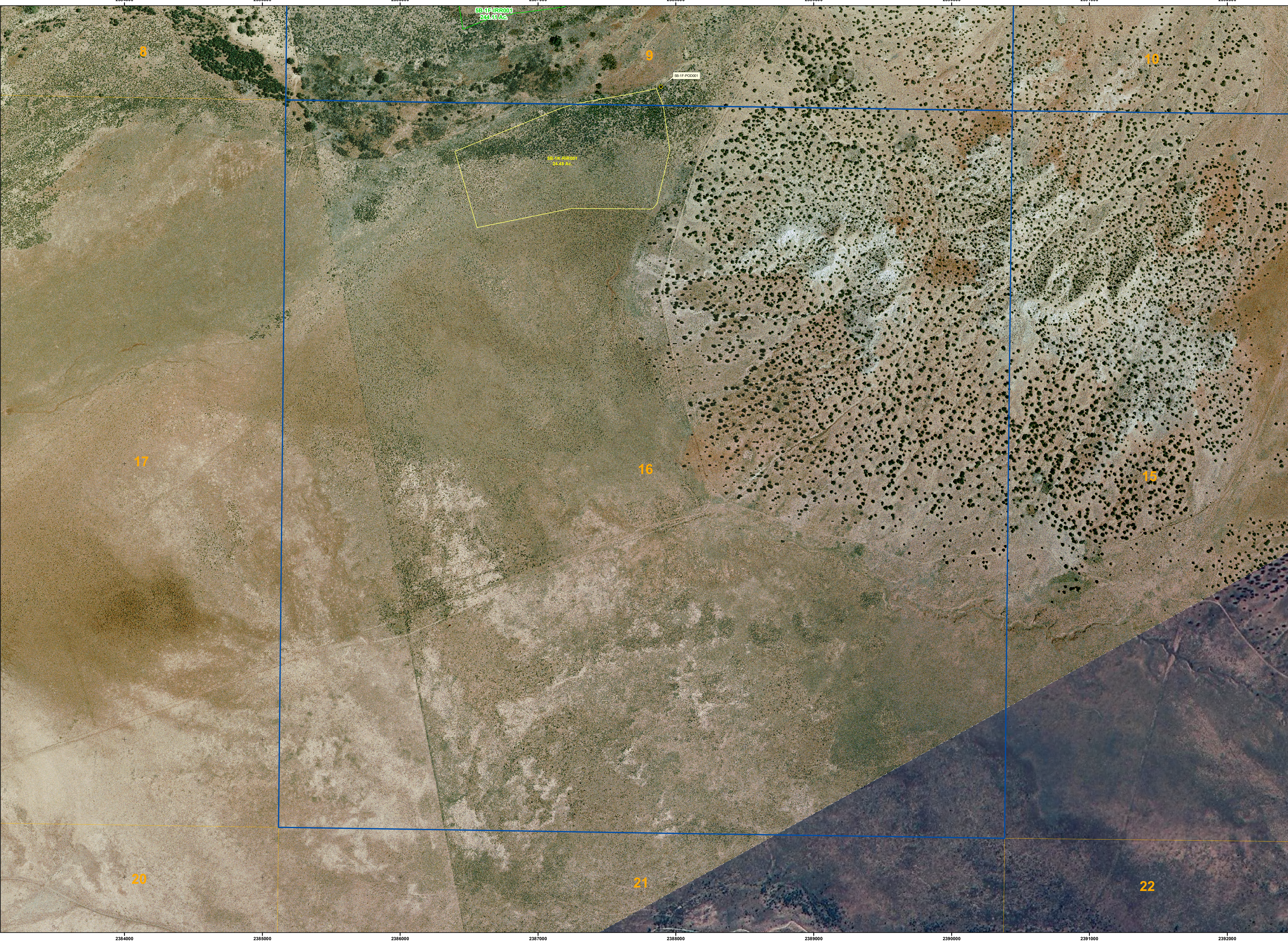


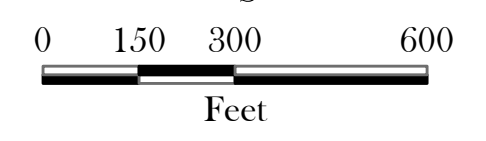
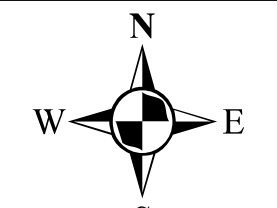
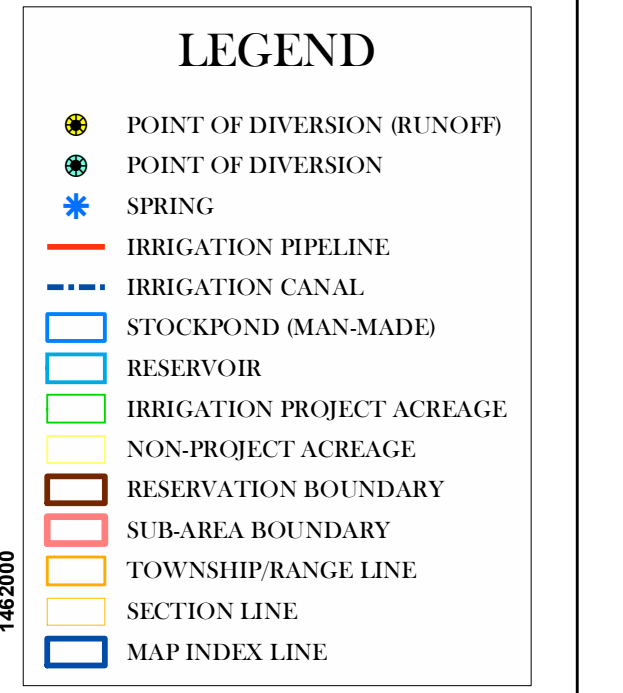
2384000 2385000 2386000 2387000 2388000 2389000 2390000 2391000 2392000

2384000 2385000 2386000 2387000 2388000 2389000 2390000 2391000 2392000

1464000
1465000
1466000
1467000
1468000
1469000
1470000



INDEX



March 2007

Labels that are truncated appear on an adjacent map.
Map is displayed in New Mexico State Plane Coordinate System, West Zone, NAD 1983.
Background Sources:
Aerial photography exposed July, 2001 by New Mexico Aerial Surveys, Inc. of Albuquerque, New Mexico.
Digital Orthophoto Quarter-Quadrangles were produced by the New Mexico Geospatial Data Acquisition Coordination Committee (2005)
Section, Township, and Range lines originated from the Bureau of Land Management's (BLM) Geographic Coordinate Data Base (GCDB), received from EnviroLogic, Inc.

Township: 9 North Range: 20 West

**Zuni River Basin Hydrographic Survey
Irrigated Acreage - Zuni Indian Reservation
Map 5B-1K 1" = 300'**

Natural Resources Consulting Engineers, Inc.
Fort Collins, CO Oakland, CA Asmara, ERTREA
Project Manager:
L. Niel Allen, P.E., Ph.D.

